



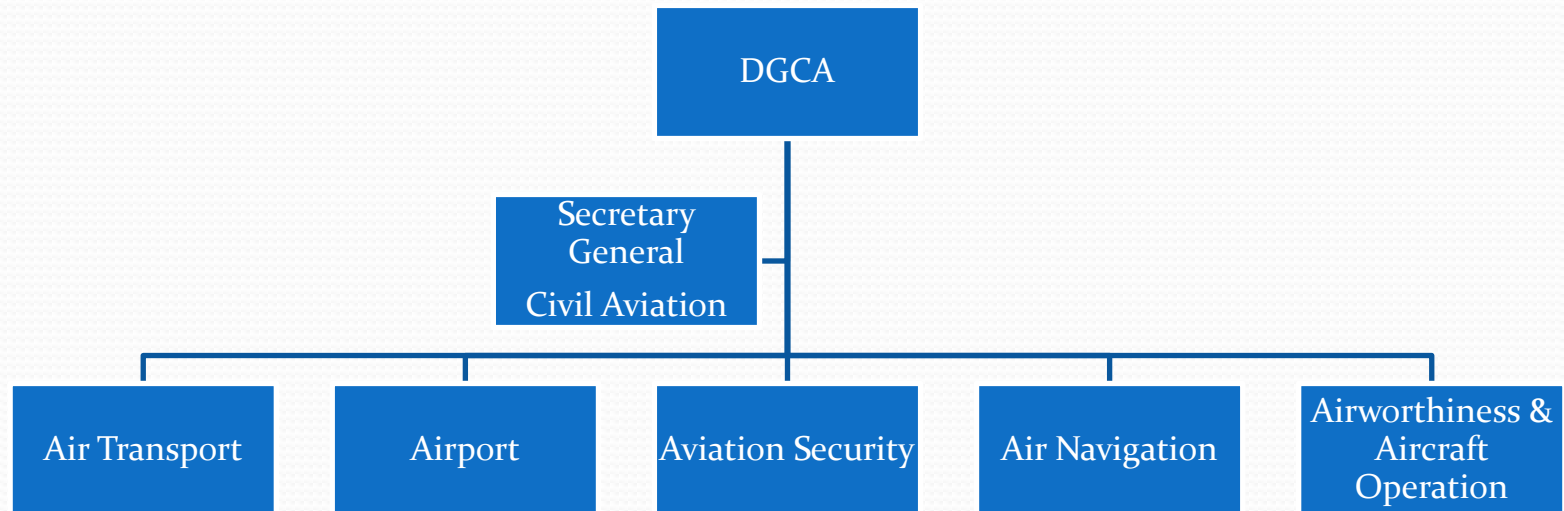
Directorate of
Airworthiness &
Aircraft Operation

Cabin Safety OverSIGHT DGCA INDONESIA



Directorate of
Airworthiness &
Aircraft Operation

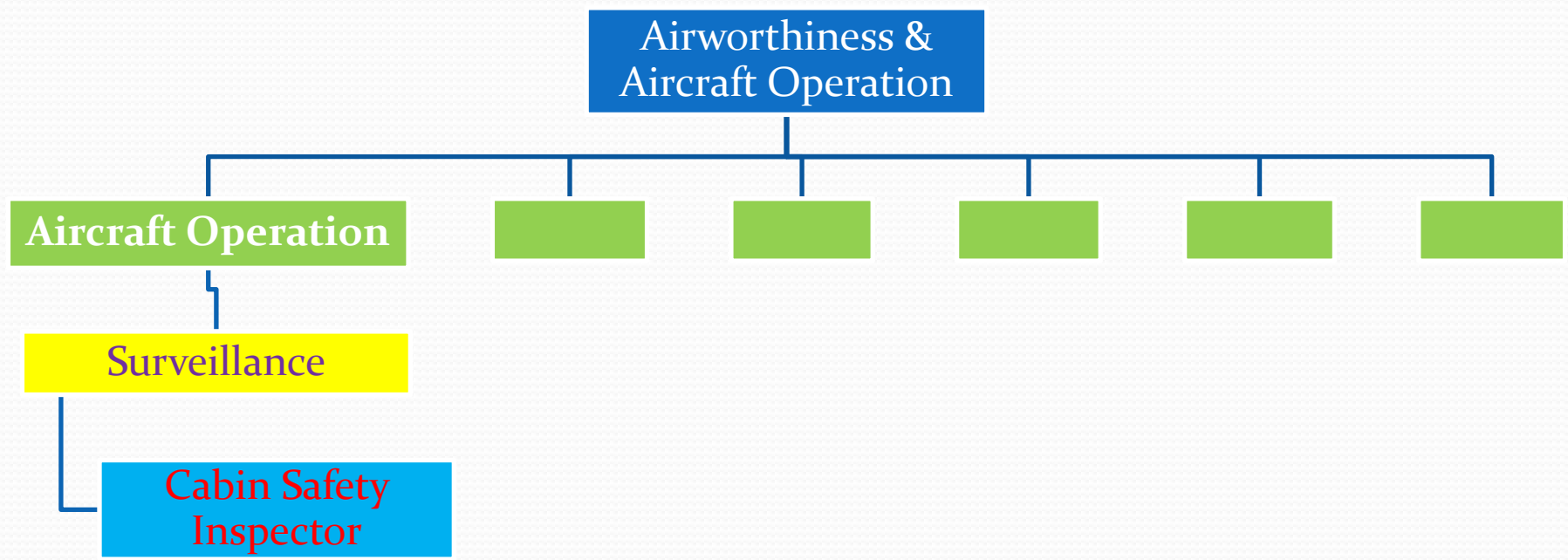
Structure Organization





Directorate of
Airworthiness &
Aircraft Operation

Structure Organization





Directorate of Airworthiness & Aircraft Operation



**26 Air operators,
holder AOC 121 and 135.
Total number
of Flight Attendant about
7000 , data on Oct 2013**



Annual Surveillance Program

Ref to Staff Instruction 8400 vol 4

The minimum numbers of the various types of inspections must be accomplished are as follows:

- A. *Manual Inspections.* All operations manuals (AOM, AFM, MEL, Cabin Crew, etc.), instructions, and procedures currently in use with Indonesia air operators will be reviewed once every two years.



Annual Surveillance Program *Continue ...*

- B. *Operations Control Inspections.* One inspection annually for each operator.
- C. *Trip Records Inspections.* One inspection annually for each operator.
- D. *Flight Time and Duty Records Inspections.* One inspection annually for each operator.
- E. *Training Program Inspections.* Approved training manuals covering all types of training conducted by each operator - ground, simulator, and flight - must be reviewed for content and currency within two years.



Annual Surveillance Program *Continue ...*

F. Training Records Inspections. One inspection annually for each operator.

G. Cabin Enroute Inspections.

1. For operator holding AOC 121:

a. Domestic and Flag air carriers: Four random inspections annually

b. Supplemental air carrier: Two random inspections annually



Annual Surveillance Program *Continue ...*

2. For operator holding AOC 135:
 - a. Commuter air carrier: 2 random inspections annually
 - b. Charter air carrier operating airplane with seating of more than 10 but less than 31: 1 random inspection annually
 - c. Airplane with seating of 10 or less, operated exclusively for VIP charter or for owner, or helicopter: Not applicable.



Annual Surveillance Program *Continue ...*

Ramp Inspections.

1. For operator holding AOC 121:
 - a. Domestic and Flag air carriers: Minimum of four inspections Annually; for each operator.
 - b. Supplemental air carrier: Minimum of two inspections annually; for each operator.

2. For operator holding AOC 135:
 - a. Commuter air carrier: Minimum of two inspections annually ;for each operator.
 - b. Charter air carrier: Minimum of one inspection annually ;for each operator.



Directorate of
Airworthiness &
Aircraft Operation

Sample of Finding Items





Directorate of
Airworthiness &
Aircraft Operation

Sample of Finding Items





Directorate of
Airworthiness &
Aircraft Operation

Sample of Finding Items





Directorate of
Airworthiness &
Aircraft Operation

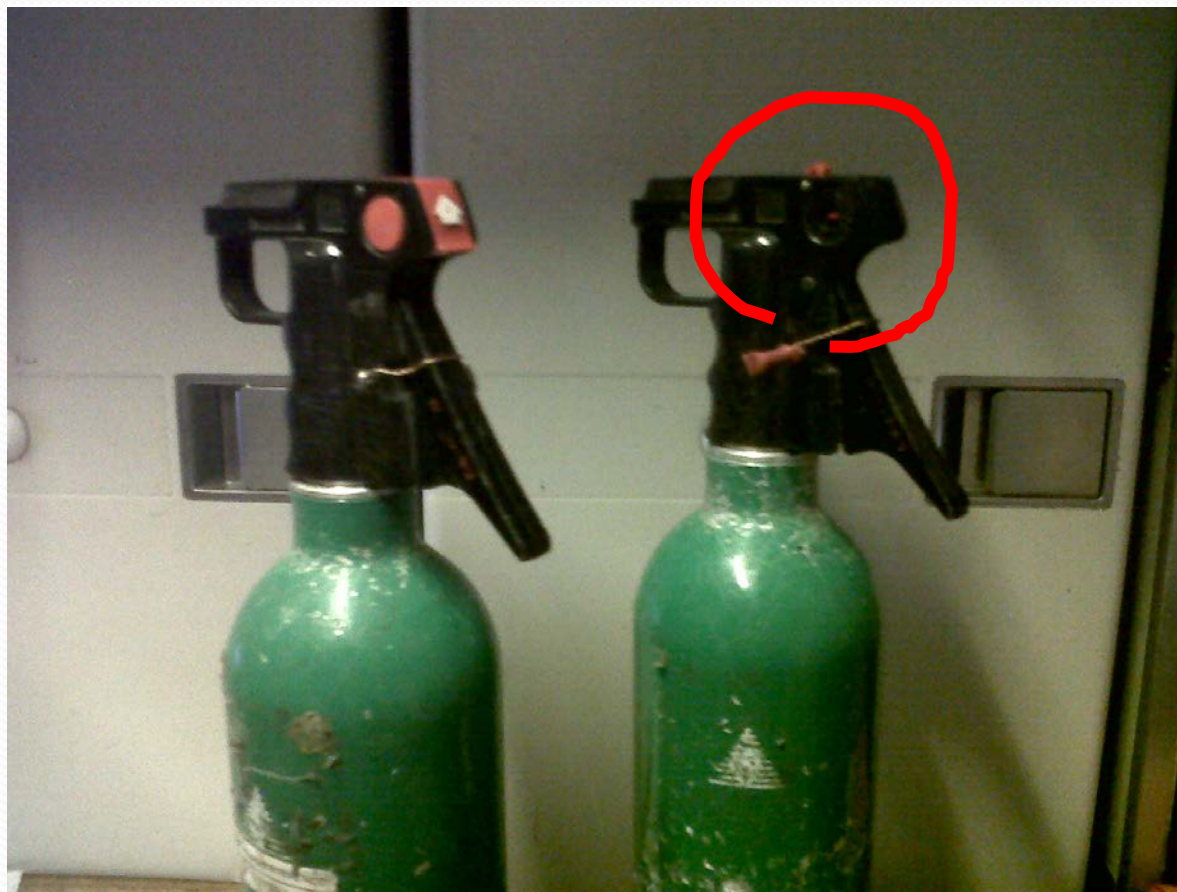
Sample of Finding Items





Directorate of
Airworthiness &
Aircraft Operation

Sample of Finding Items





Directorate of
Airworthiness &
Aircraft Operation

Sample of Finding Items





Directorate of
Airworthiness &
Aircraft Operation

Sample of Finding Items





Directorate of
Airworthiness &
Aircraft Operation

Sample of Finding Items





Directorate of
Airworthiness &
Aircraft Operation

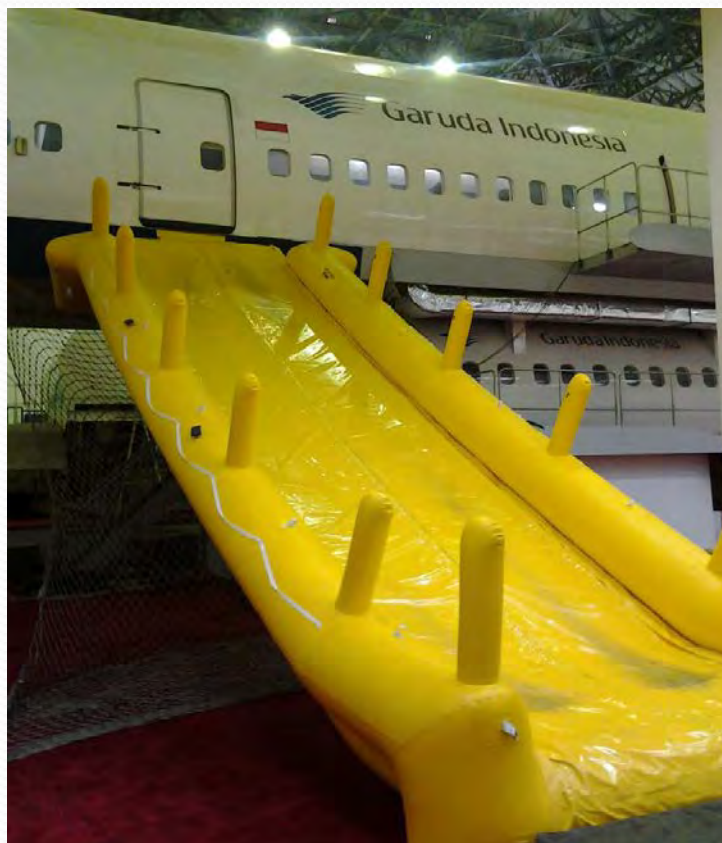
Partial Demo Evac





Directorate of
Airworthiness &
Aircraft Operation

Surveillance Ground Training



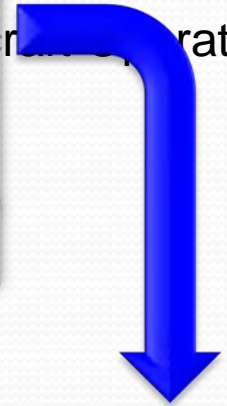


Preparation meeting



Security check process

Directorate of
worthiness &
regulation



AOC CERTIFICATION



FA Safety Demo



Preflight check



Boarding process



Emergency simulation



Cockpit enroute check



MINISTRY OF TRANSPORTATION
 DIRECTORATE GENERAL OF CIVIL AVIATION
 Directorate of Airworthiness and Aircraft Operations, Karya Building, 22nd Floor
 Jl. Merdeka Barat No. 3, Jakarta Pusat
 Tlp. : (62-21) 3506054, 3506665 Fax. : (62-21) 3506663
 Box 3049, Jakarta 10030



Directorate of
 Airworthiness &
 Aircraft Operation

AIR OPERATOR CABIN INSPECTION CHECKLIST/REPORT

Operator		Flight No.	Date	From	To
Type Aircraft	Reg. Mark.	Captain		Senior Cabin Attendant	

S=Satisfactory, U=Unsatisfactory, N=Not Observed

A. AIRCRAFT EQUIPMENT			
1. Required Signs and Placards	12. Lavatories <ul style="list-style-type: none"> Signs/Lights Smoke Alarms Trash Containers Extinguishers 	5. Personal Equipment <ul style="list-style-type: none"> Cockpit Key and Flashlight 	
2. Logbooks <ul style="list-style-type: none"> Open Items Carryover Items Cabin Items 	13. Stowage Areas <ul style="list-style-type: none"> Latch Mechanisms Access to Equipment 	6. Manual <ul style="list-style-type: none"> Available Current 	
3. Fire Extinguishers <ul style="list-style-type: none"> Correct Type Number Location Service 	14. Emergency Lighting <ul style="list-style-type: none"> Tested/Operable Floor/Escape Path 	C. FLIGHT CONDUCT	
4. Megaphones <ul style="list-style-type: none"> Number Location Tested 	15. Exits <ul style="list-style-type: none"> Controls/Seals Gift Bar and Brackets Signs/Symbols Rafts/Lanyards 	1. Predeparture <ul style="list-style-type: none"> PAX Boarding Carry-on Baggage PAX Count Door Arming Report to Cockpit 	(See back for Remarks)
5. Portable O ₂ Bottles <ul style="list-style-type: none"> Number Service Location Condition Mask/Hoses 	B. FLIGHT ATTENDANTS		
6. FBE <ul style="list-style-type: none"> Properly Slowed Sealed 	1. Crew Compliment <ul style="list-style-type: none"> Initial Boarding En Route Stops 	2. Predeparture Briefings <ul style="list-style-type: none"> Smoking Exit Locations Seatbelt Use Flotation Devices Stowage of Baggage Use of Oxygen Special PAX 	
7. PAX Briefing Cards <ul style="list-style-type: none"> At Each Seat Required Information 	2. Coordination with Cockpit	3. Taxi/Takeoff <ul style="list-style-type: none"> Cabin Secured FA Position Takeoff Signal Announcement 	
8. PAX Seats <ul style="list-style-type: none"> Emergency Exits Condition Ash Trays Seatbelts/Tray Tables Life Preservers 	3. Knowledge <ul style="list-style-type: none"> PIC Authority Cabin Fires Cabin Logbook PSU Emergency Communications with Cockpit Location and Use of Emergency Equipment Decompression Turbulent Air Unruly PAX Hijacking Contents of FA Manual 	4. Cruise <ul style="list-style-type: none"> Monitor Signs Crew Coordination Passenger Handling Turbulent Air Procedures 	
9. PAX O ₂ Service Units <ul style="list-style-type: none"> Operational Service Pins 	4. Ability/Proficiency <ul style="list-style-type: none"> Remove/Demo use of O₂ and Fire Bottles Demo Emergency Exit Procedures Demo "Brace for Impact" Position Demo Donning of Life Vests 	5. Approach/Landing/Arrival <ul style="list-style-type: none"> Announcements Cabin Secured Passenger Seatbelts FA Position Passenger Monitoring Doors de-armed 	
10. FIA Station <ul style="list-style-type: none"> Retracts Seatbelts/Inertial Locks FA and Interphone 			
11. Galleys <ul style="list-style-type: none"> Latch Mechanisms Restraints, Tiedowns, Covers Cleanliness/Corrosion Lifts/Elevators Water Quality 			

Sample of Surveillance Form



<p>A. AIRCRAFT EQUIPMENT</p> <p>1. <u>✓</u> Required Signs and Placards</p> <p>2. <u>✓</u> Logbooks</p> <ul style="list-style-type: none"> • Open items • Carryover items • Cabin Items <p>3. <u>✓</u> Fire Extinguishers</p> <ul style="list-style-type: none"> • Correct Type • Number • Location • Serviced <p>4. <u>✓</u> Megaphones</p> <ul style="list-style-type: none"> • Number • Location • Tested <p>5. <u>✓</u> Portable O₂ Bottles</p> <ul style="list-style-type: none"> • Number • Service • Location • Condition Mask/Hoses <p>6. <u>✓</u> PBE</p> <ul style="list-style-type: none"> • Properly Stowed • Sealed <p>7. <u>✓</u> PAX Briefing Cards</p> <ul style="list-style-type: none"> • At Each Seat • Required Information <p>8. <u>✓</u> PAX Seats</p> <ul style="list-style-type: none"> • Emergency Exits • Condition • Ash Trays • Seatbelts/Tray Tables • Life Preservers <p>9. <u>✓</u> PAX O₂ Service Units</p> <ul style="list-style-type: none"> • Operational • Service Pins <p>10. <u>✓</u> F/A Station</p> <ul style="list-style-type: none"> • Retracts • Seatbelts/Inertial Locks • PA and Interphone <p>11. <u>✓</u> Galleries</p> <ul style="list-style-type: none"> • Latch Mechanisms • Restraints, Tie-downs, Covers • Cleanliness/Corrosion • Lifts/Elevators • Water Quality 	<p>12. <u>✓</u> Lavatories</p> <ul style="list-style-type: none"> • Signs/Lights • Smoke Alarms • Trash Containers • Extinguishers <p>13. <u>✓</u> Stowage Areas</p> <ul style="list-style-type: none"> • Latch Mechanisms • Access to Equipment <p>14. <u>✓</u> Emergency Lighting</p> <ul style="list-style-type: none"> • Tested/Operable • Floor/Escape Path <p>15. <u>✓</u> Exits</p> <ul style="list-style-type: none"> • Controls/Seals • Girt Bar and Brackets • Signs/Symbols • Rafts/Lanyards <p>B. FLIGHT ATTENDANTS</p> <p>1. <u>✓</u> Crew Compliment</p> <ul style="list-style-type: none"> • Initial Boarding • En Route Stops <p>2. <u>✓</u> Coordination with Cockpit</p> <p>3. <u>✓</u> Knowledge</p> <ul style="list-style-type: none"> • PIC Authority • Cabin Fires • Cabin Logbook • PSU • Emergency Communications with Cockpit • Location and Use of Emergency Equipment • Decompression • Turbulent Air • Unruly PAX • Hijacking • Contents of FA Manual <p>4. <u>✓</u> Ability/Proficiency</p> <ul style="list-style-type: none"> • Remove/Demo use of O₂ and Fire Bottles • Demo Emergency Exit Procedures • Demo "Brace for Impact" Position • Demo Donning of Life Vests 	<p>5. <u>✓</u> Personal Equipment</p> <ul style="list-style-type: none"> • Cockpit Key and Flashlight <p>6. <u>✓</u> Manual</p> <ul style="list-style-type: none"> • Available • Current <p>C. FLIGHT CONDUCT</p> <p>1. <u>✓</u> Predeparture</p> <ul style="list-style-type: none"> • PAX Boarding • Carry-on Baggage • PAX Count • Door Arming • Report to Cockpit <p>2. <u>✓</u> Predeparture Briefings</p> <ul style="list-style-type: none"> • Smoking • Exit Locations • Seatbelt Use • Flotation Devices • Stowage of Baggage • Use of Oxygen • Special PAX <p>3. <u>✓</u> Taxi/Takeoff</p> <ul style="list-style-type: none"> • Cabin Secured • FA Position • Takeoff Signal • Announcement <p>4. <u>✓</u> Cruise</p> <ul style="list-style-type: none"> • Monitor Signs • Crew Coordination • Passenger Handling • Turbulent Air Procedures <p>5. <u>✓</u> Approach/Landing/Arrival</p> <ul style="list-style-type: none"> • Announcements • Cabin Secured • Passenger Seatbelts • FA Position • Passenger Monitoring • Doors de-armed <p>(See back for Remarks)</p>
--	--	---

Sample of Surveillance



Process for Finding Items



DIRECTORATE GENERAL OF CIVIL AVIATION
DIRECTORATE OF AIRWORTHINESS AND AIRCRAFT OPERATIONS

SURVEILLANCE SUMMARY

OPERATOR / COMPANY: . PRIMA AVIATION 121

DATE: 24 Jul 2012

Printed on Jul 24, 2012

NO.	DESCRIPTION	REFERENCE	TYPE OF FINDING	TARGET DATE	OPERATOR COMMENTS / ACTIONS	STATUS
MANUAL INSPECTION						
1	<p>This inspection was conducted at Head Office dated 16 April 2012, the type of manual inspected Flight Attendant Manual (FAM). While inspection, there were findings relating with FAM, as follows :</p> <ul style="list-style-type: none">- The record of revision hasn't updated and this form should be changed in standard form of other manuals.- Cabin jump seat procedure didn't relevant with and violate the applicable rules (2.12.2)- The duty of Chief FA hasn't stated in FAM- Fire extinguisher was found error type- Pre flight check for emergency equipment hasn't standardized since the expired date should be written.The Chapter of Aircraft type wasn't found header type, means hasn't listedThe pre flight check performance (refer to Chapter 7) should be clearly defined. (page 3-7)- The procedure of oxygen usage system hasn't stated. <p>conclusion : the anatomy of manual should be redesigned as practicable and accessible.</p>		Non Conformance	Agust 10, 2012		Open



Directorate of
Airworthiness &
Aircraft Operation

THANK YOU